

## Company Profile

Ecode was established in 2005 and introduced as a consultant of Electronic and IT Turnkey Projects, in this era of IT & Electronics Technology it offers PCB Designing, Manufacturing, Repairing and Web Solutions.

Ecode has its own specialized engineering workforce who is capable of providing end-to-end solutions of customer's ideas to develop their projects with utmost care.

### Vision:

The company was established with a vision to meet customers project needs from ideas to production and proves as his complete IT & Electronic partner.

### Mission:

Our Mission is to provide technical and engineering assistance customers that lacked certain engineering knowledge to achieve goals in their core competencies.

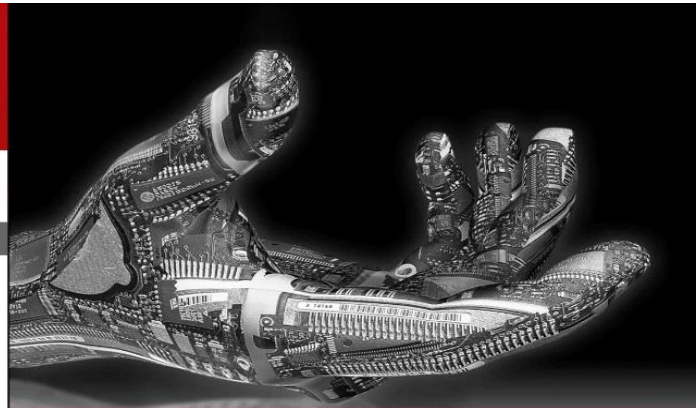
### Values:

Our business is depend on the relationship of customers through mutual understanding and trust as we are committed to provide exceptional services and technical and engineering assistance as per demands.

### UNIVERSAL SCREENER

The Finest PCB Manufacturere, Importer,  
Expoter & Retailer

<http://universalscreener.com/> +92-213-5680974



## Get In Touch

+92-21-35433353  
Info@ecodepk.com  
www.ecodepk.com

## Ecode (Pvt) Ltd.

E Generation Solution

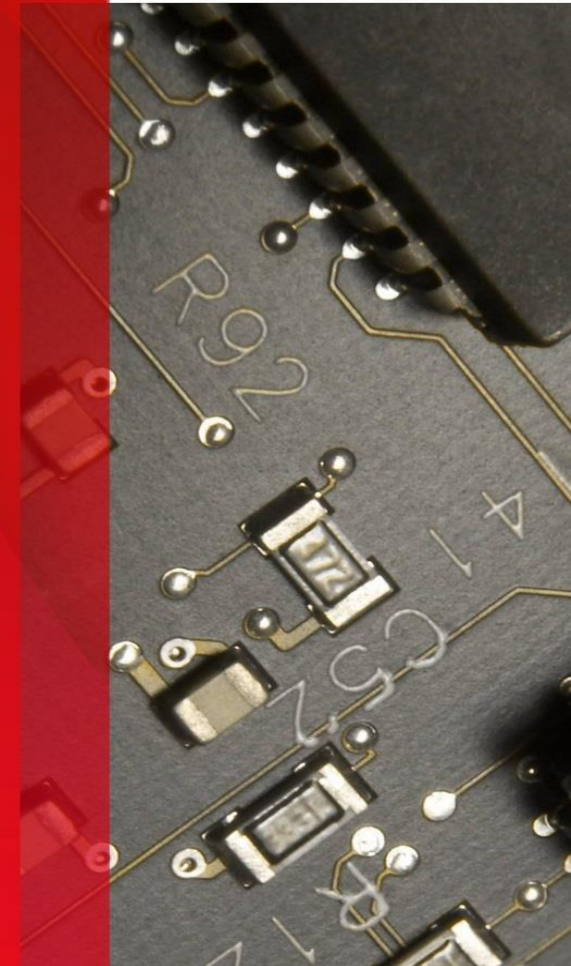
Suit# 8-B, 3rd Floor,  
Sasi Arcade, Block 7,  
Clifton Karachi Pakistan



Turnkey Electronics and IT Consultant!

E Generation Solution

Ecode is consultant of Electronic and IT Turnkey Projects, in this era of IT & Electronics Technology it offers PCB Designing, Manufacturing, Repairing and Web Solution.



## SERVICES

### PCB Design

Ecode offers the most powerful PCB design services with the experienced engineering team with in the state-of-the-art tools & technologies that best utilize to deliver the high quality, cost effective design to meet our customer technical requirement & demanding schedules.

### Reverse Engineering

If your existing PCB design was based on previous generation of technology or you have lost the design file, we can help you to restore it by Reverse Engineering. Ecode specialized in Reverse Engineering of Electronic Products and provide support for Engineering Documentation in CAD (computer aided design) format.

### Repair & Maintenance

Ecode repair services for Industrial Electronics, IT, Telecom and Healthcare equipment's. We offer annual Repair & Maintenance services with calibration of all electronic equipment's or PCBs. We are specializes in repair, BGA rework, Test and Inspection of circuit boards with fully equipped electronic Lab facility.

## CAPABILITY & EXPERTIES

- “ Schematic Capture and Netlist generation.
- Single layer to multi-layer PCBs.
- Surface mount, BGA and through-hole designs with blind and Buried vias.
- High density interconnects designs.
- Split ground planes and power planes for mixed analog and digital designs.
- Designers experienced in high speed board designing.
- We select the software on customer's choice.

- “ PCB Reverse Engineering (From physical PCB to PCB Layout).
- PCB Reverse Engineering (From physical PCB to Schematic).
- Electronic Product Reverse Engineering.
- Alternative components suggestions.
- Files delivery in various compatible formats.
- Multilayer boards Reverse Engineering.
- Product up gradation.
- Upto 4 layers.

- “ Preventive maintenance services.
- Annual repair & maintenance contract.
- Equipment commissioning & installation.
- PLC installation & programing.
- Firmware Program & Up gradation.
- System Up gradation.
- Level 3 & 4 repair expertise.

We are capable to provide all OEM, Non-Warranty, Upgrades and Obsolete repair services for a wide range of items.

CALL +92-21-35433353  
OR FIND US ON WEB

[www.ecodepk.com](http://www.ecodepk.com)